

NEO

VS

CourseNetworking

Table of contents

Introduction	3
User interface	4
Ease of use	5
Features.....	6
Cost.....	10
Summary.....	11

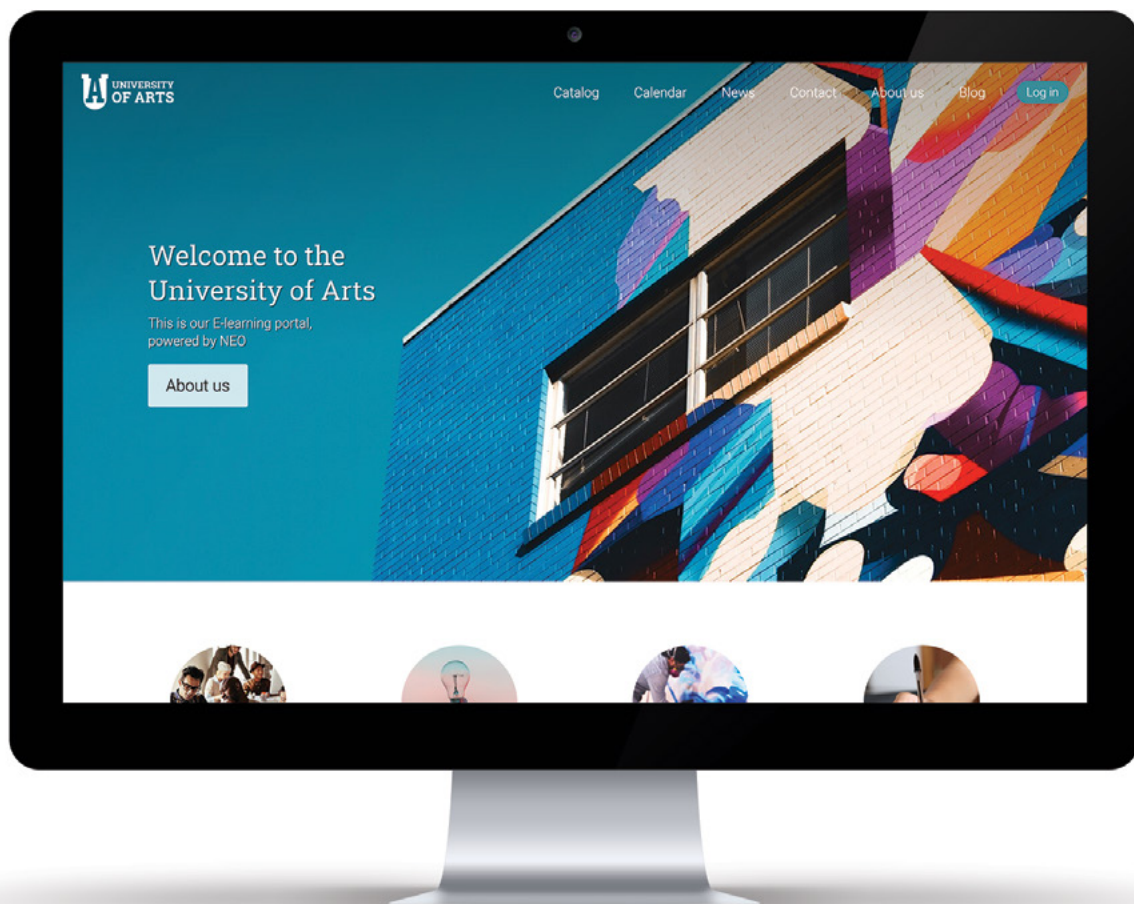


Introduction

NEO is a world-class, award-winning LMS for use by schools and universities. The platform is known for its easy-to-use and beautiful user interface, comprehensive set of innovative features, and pricing that provides great value for money. With NEO it's easy to create great classes that students will enjoy anytime, everywhere.

NEO is a product of CYPHER LEARNING, which also provides a similar LMS for use by businesses called MATRIX. Both NEO and MATRIX are used by over 20,000 organizations, support 40+ languages, and have millions of users.

Course Networking (CN) is an open source LMS for classroom learning and MOOC courses.



User interface

The [NEO](#) interface is a modern, responsive design that looks sharp and automatically adjusts based on the type of device. It provides attractive tile-based dashboards for students, teachers and administrators, a graphical class catalog, as well as simple pop-out navigation. Many features can be enabled or disabled to suit young children through to college students. It provides rich content authoring as well as a visually attractive way to create and organize lesson material. NEO also has a unique “activity display” feature that indicates the level of activity within classes and groups using a pulsing indicator on their tiles together with real-time widgets that scroll through the latest activities.

The [CourseNetworking](#) interface is not as intuitive and lacks many of the graphical and visual elements that are expected in a modern LMS. The user interface resembles Facebook, especially its main page news feed, user profiles, left navigation bar and top bar. The user interface is not customizable, and you can't choose your own theme, color scheme, fonts, or terminology. CourseNetworking does not offer a customizable visitor portal where schools can display their classes, school information, and a calendar.

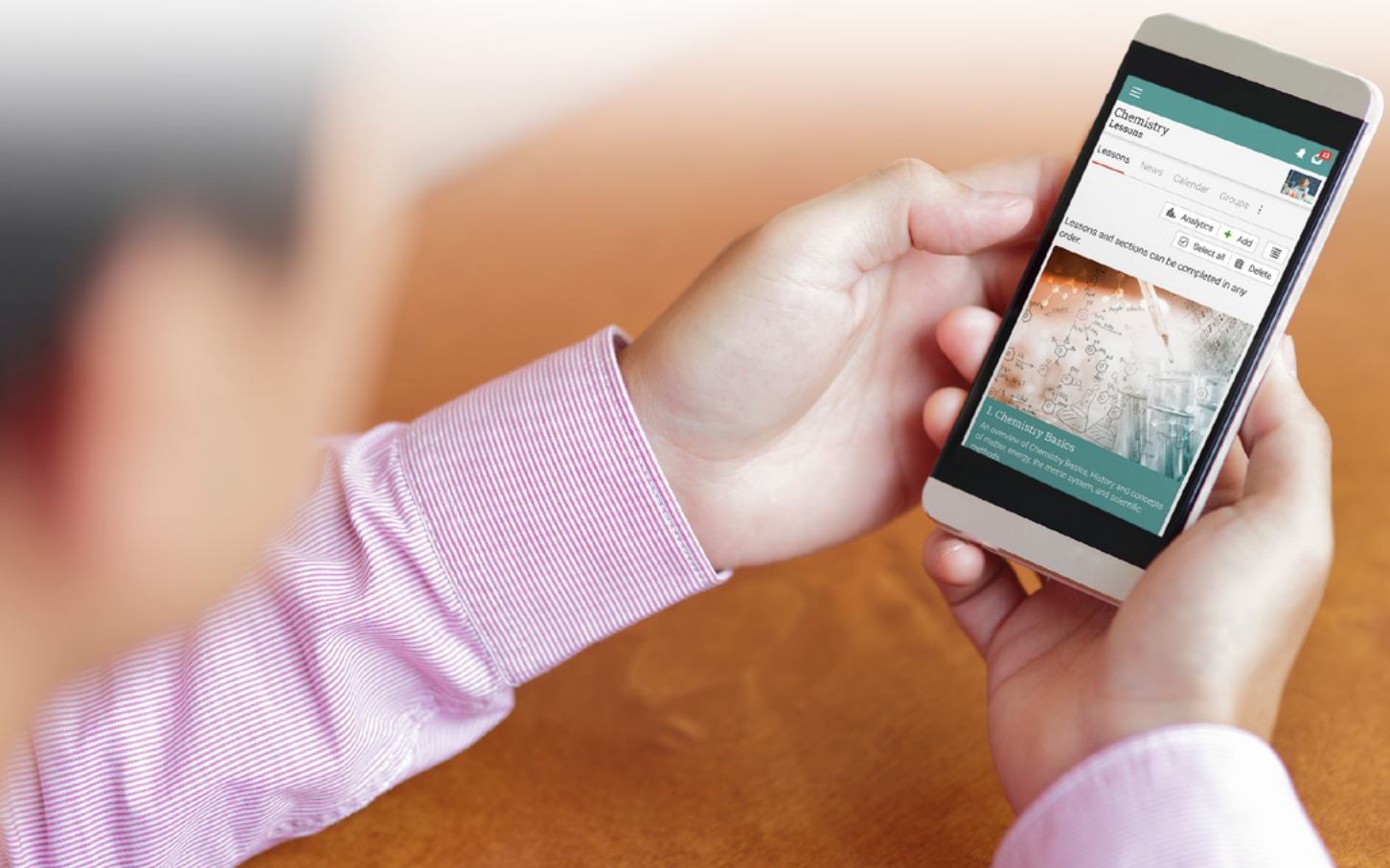
Organizations have the option to get a private CourseNetworking Channel to access customization options (logo, public page, billboard postings) for a subscription fee. There is no graphical catalog for displaying courses and no graphical dashboards for users. CourseNetworking has mobile apps for iOS and Android.



Ease of use

NEO is very intuitive and easy to use. In addition, it includes an online help center, with videos, getting started guides, and searchable help content. NEO also has a rapid response support forum where staff members typically respond to questions within 15-30 minutes during business hours 24/5.

CourseNetworking is easy to use and has 24/7 help desk support and tutorials. It also offers user training and content creation services for CN channels (paid subscriptions).



Features

NEO provides the range of functionality you'd expect in a modern LMS, such as support for classes (instructor led, blended, self-paced, and micro learning), 15 kinds of assignments, full-featured gradebook, content authoring, beautiful lesson layouts, gamification, rules engine, learning paths, drip content, competencies (including US common core standards and Next Generation Science Standards), question banks, class templates, rubrics, chat rooms, resources catalog, blogs, wikis, a customizable portal, e-portfolios, and more.

NEO supports many important industry standards such as SCORM, Common Cartridge Format, LTI, QTI, and LDAP. We also integrate with a wide variety of systems, including Google Drive, Google Workspace, Single sign-on with Office 365, OneDrive, Calendars (iCal), PayPal, Stripe, Authorize.net, Turnitin, Zapier, GoToMeeting, Zoom, WebEx, SIS, Equella, and SMTP/POP3.

CourseNetworking offers a smaller feature set and has a social media-based philosophy in almost everything. Courses are mostly built around "tasks" and don't have a typical layout of sequences of lessons with content and assessments. The configuration options per class are quite limited and there are many essential classroom functionalities missing.



Here is a list of the features included with [NEO](#) that are not supported by [CourseNetworking](#):

User interface

- Customizable visitor portal
- Graphical resources catalog
- Graphical class catalog
- Graphical lessons tiles
- Graphical dashboards
- Support for more than 40 languages
- Branded mobile apps
- Activity display
- Automatic translation of messages and forum posts

Content

- Class ratings and reviews
- Graphical badges gallery
- Printing PDF certificates
- Competency-based learning
- Archiving classes
- Adaptive learning
- Class templates
- Learning paths
- Seating charts
- Offline mode
- E-commerce
- Drip content
- Compliance
- Automation
- Waitlists
- Tagging

Assessment and analytics

- Attendance tracking
- Peer reviewed assignments
- Rubrics
- Assessments such as debates, team, and attendance
- Scheduled reports
- Custom reports
- Report widgets



Collaboration

- Forums
- Wikis
- Live chat
- Blogs
- Integration with CometChat

Integrations

- Common Cartridge Format
- Integration with 1,500+ apps via Zapier
- Integration with your own email server
- MS Immersive Reader
- Unicheck plagiarism detection
- Safe Exam Browser
- MS OneNote
- Google Drive
- MailChimp
- App center
- Office 365
- OneDrive
- Kimono
- Equella
- Google Workspace
- Udemy
- LDAP
- H5P
- iCal
- SIS
- Go1



Payment gateways

- PayPal Payments Pro
- Authorize.net
- PayU Latam
- PagSeguro
- PayUbiz
- Flywire
- PayPal
- Stripe

Web conferencing

- GoToMeeting
- Google Meet
- MS Teams
- Zoom
- Kaltura
- WebEx

Other

- Seating charts
- Terms and conditions
- SEO features
- Purchase orders
- Trash can
- E-commerce



Cost

NEO has a Free plan with a comprehensive set of essential LMS features and a Premium plan for schools that need more powerful functionality. There are no setup fees, cancellation fees, storage fees, bandwidth fees, support fees, or other hidden costs.

CourseNetworking offers a free version of their platform, but for most essential features that schools need, there is a paid license. The paid private channel for licensed institutions offers full control over user account creation, campus wide analytics, the campus social network, and other functionality.



Summary

This was a comparison of the most important feature differences between [NEO](#) and [CourseNetworking](#).

NEO is a more attractive LMS than CourseNetworking, offering a larger set of features suitable for both K-12 and Higher Education clients. In addition, it has a better user interface and more options for class creation and assignments.

Schools that don't need LMS "power" features can choose the NEO Free plan, which is beautiful, easy-to-use, and includes the core functionality of a modern LMS. Note that CourseNetworking does not provide a free plan for entire universities.

If you require additional information on NEO, please contact us at sales@cypherlearning.com.

www.neolms.com



This comparison was written in August 2020 based on publicly available documentation on both vendors' sites. It was prepared as a guide and is not intended to be exhaustive. The comparison information does not constitute any contractual representation, warranty or obligation on our part. Liability for errors, omissions or consequential loss is expressly disclaimed. If you find any information in this comparison guide to be inaccurate, please contact us and we will correct the information.

