

NEO

VS

Google Classroom

Table of contents

Introduction.....	3
User interface	4
Ease of use	6
Features.....	7
Cost.....	13
Summary.....	14

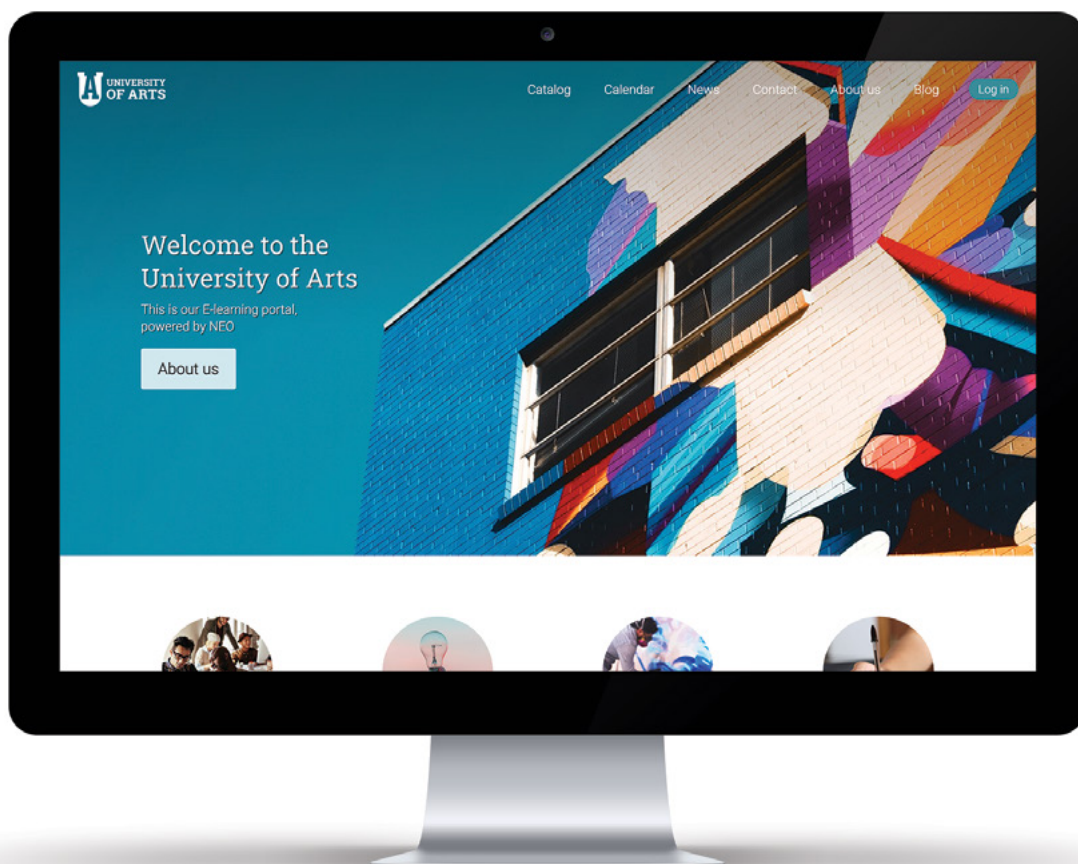


Introduction

This is a detailed comparison between NEO and Google Classroom, taking under consideration the features, functionality, and cost of each platform.

NEO is a world-class, award-winning learning management system (LMS) for schools and universities. NEO helps schools manage all classroom activities, such as creating and delivering educational content, assessing students, tracking their results, and promoting communication and collaboration between students and teachers/faculty.

Google Classroom is an LMS for K-12 schools developed by Google. There is also a version that is open to all users that have a Google account.



User interface

The [NEO](#) interface has a responsive design that looks sharp and automatically adjusts based on the type of device. It provides attractive tile-based dashboards for students, teachers and administrators, as well as a graphical class, resources and users catalog. Users can also see to-do items, upcoming events, groups, calendar, and more. NEO also has a unique “activity display” feature that indicates the level of activity within classes and groups using a pulsing indicator on their tiles together with real-time widgets that scroll through the latest activities.

The [Google Classroom](#) dashboard is simple, but not as graphical. Instructors and students can only see the courses that they are teaching or are enrolled in.

NEO offers a simple pop-out navigation system with shortcuts and easy access to all areas of a site no matter where you are in the platform. Users can access the classes, groups, settings, and more from the pop-out menu in the left bar instead of loading another page.

In Google Classroom, the main menu can be hidden or unhidden, but there is no pop-out navigation for the main items on the menu. All classes are displayed in the left menu so users have to scroll down the left bar to find a class if there are more than a few on the list.



The [NEO](#) class layout is very intuitive and users can choose from a graphical tile or row format. Each tile displays important information such as the badges, points, and certificates that the lesson awards. Students can see their progress through a class and lesson indicated with icons on each tile.

The [Google Classroom](#) class layout is divided into three pages: the stream or news feed, classwork and people. The classwork page is the most important since the stream only shows notifications. However, teachers can only add a limited amount of class materials and there is no HTML editor for content pages. They have the option of adding the materials under the same topic.

NEO offers native mobile apps for iOS and Android, as well as branded apps for schools that require them.

The platform also has many accessibility features, such as hidden content that improves screen reader use, a 'skip to content' shortcut, underlined links setting, and a high contrast theme.

Google Classroom is available for iOS and Android devices and is less accessible for students with disabilities since it only supports screen reader use. There is no option for custom mobile apps.



Ease of use

NEO is very intuitive and easy to use. In addition, it includes an online help center with videos, getting started guides, and searchable help content. NEO also has a rapid response support forum where staff members typically respond to questions within 15-30 minutes during business hours 24/5.

Google Classroom is somewhat easy to understand and use, has a help center with tutorials and a help forum.



Features

NEO has all the essential features that help teachers save time and make learning more engaging for students. Google Classroom provides a very limited feature set as it lacks many essential tools such as a built-in authoring tool, a grade book, automation and has a small range of available assignment types.

Creating content

NEO offers a wide range of class types to suit any teaching style, whether it is instructor-led, blended, self-paced classes, or micro classes. In addition, NEO has a built-in authoring tool that allows teachers to easily create beautiful classes for their students.

In Google Classroom, teachers can add instructor-led or blended learning classes. It does not have a built-in authoring tool, only the option of adding an assignment, question, material or Google Drive files to the “classwork” page.

Student assessment

NEO offers 15 assignment types, including quizzes, essays, team, debate, Dropbox, Turnitin, discussion and survey. Google Classroom has very limited options as teachers can create assignments, add a question (discussion), and the possibility of attaching files from Google Drive. To add a quiz, teachers have to use Google Forms.

NEO also has a powerful gradebook tool with a centralized view of all grades, which allows users to quickly add results and make changes. There is no gradebook functionality in Google Classroom.

Tracking progress

In [NEO](#), it's easy to track and measure student progress. Teachers can make sure class content is compliant with standards by adding competencies to it through mastery. They also have access to powerful analytics, built-in reports, and custom reports.

[Google Classroom](#) does not have any competency-based learning functionality or skill tracking tool. Administrators can see classroom usage reports, but there are no scheduled or custom reports. In addition, teachers cannot access reports or analytics.

Communication and collaboration

[NEO](#) helps users collaborate through various tool such as chat, messages, groups, teams, social networking, news feeds, wikis, blogs, and more. Users can also share resources via a Resources catalog that is organized into categories and subcategories.

[Google Classroom](#) has limited functionality for communication between teachers and students, most notably missing chat, built-in messaging, groups, and social networking.



Personalization and engagement

In [NEO](#), teachers can choose actions that should be performed when students complete classes, enroll in groups, fall behind on their mastery levels, and more. This helps them save time and make teaching more personalized. In addition, they can create fun site-wide, class and learning path games for their students, as well as use adaptive learning to dynamically personalize the content that students will see in classes.

[Google Classroom](#) does not have any features that can make classes more personalized and engaging.

Customization

In [NEO](#), schools can customize many aspects of the platform including its color scheme, fonts, terminology, and more. They can also create a visitor portal with their own logo, portal images, panels, carousel, custom HTML, and more.

The [Google Classroom](#) interface is not customizable, aside from small aspects such as changing the main theme of a course. This might be an inconvenience for schools that wish to add a customized visitor portal, logo, color scheme, or generally want to make their portal feel like their own.



Integrations

NEO integrates with the most popular and useful education tools such as Zapier, iCal, Turnitin, Unicheck, xAPI, Office 365, OneDrive, Panopto, GoToMeeting, WebEx, and Zoom. In addition, it integrates with Google Drive, Google Workspace, and more.

In **Google Classroom**, you can only use tools such as Google Drive or tools which are part of G Suite for Education.

Here is a list of key features included in **NEO** that **Google Classroom** does not support:

User Interface

- Graphical dashboards
- Customizable visitor portal
- Graphical resources catalog
- Graphical lessons layout
- Branded mobile apps
- Activity display
- Custom URL
- Automatic language translation of messages and forum posts

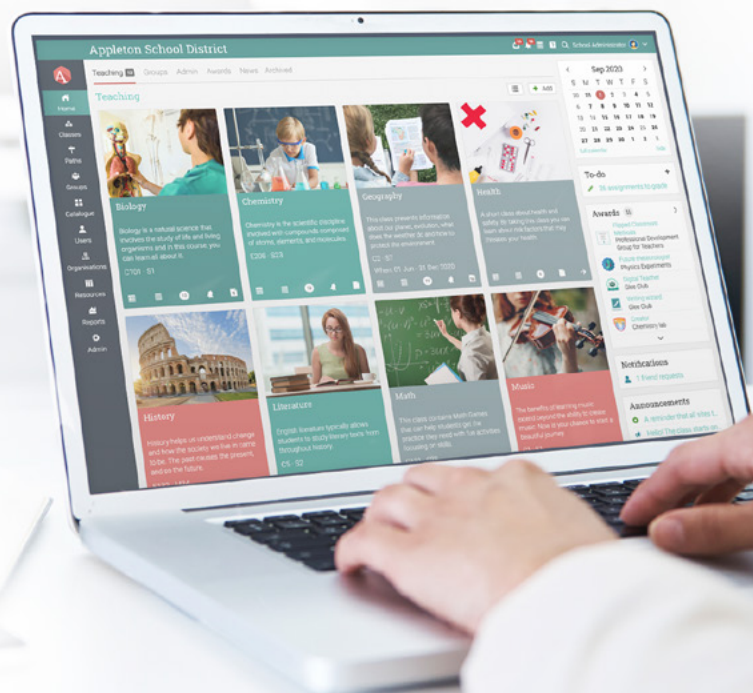


Content

- Graphical badge gallery
- Built-in authoring tool
- Learning paths
- Micro learning
- Gamification
- Drip content
- Offline mode
- Adaptive learning
- Seating charts
- Content sync
- Compliance
- Automation
- Waitlists
- Competency-based learning
- Class ratings and reviews
- Tagging
- Badges

Assessment and analytics

- Assignment types such as team, debate, essay, attendance, LTI, and more
- Scheduled and custom reports
- Attendance tracking
- Question banks
- Personalized assignments
- Gradebook
- Peer reviewed assignments
- Rubrics





Collaboration

- Organizations
- Forums
- Groups
- Teams
- Wikis
- Blogs
- Public profiles
- Chat

Integrations

- Integration with 1,500+ apps via Zapier
- MS Immersive Reader
- Safe Exam Browser
- LTI, QTI, and CCF
- MS OneNote
- MailChimp
- CometChat
- Panopto
- Kimono
- Turnitin
- MathJax
- SCORM
- Udemy
- H5P
- xAPI
- Go1

Payment gateways

- Authorize.net
- PayU Latam
- PayUbiz
- Flywire
- PayPal
- Stripe

Web conferencing

- GoToTraining
- GoToMeeting
- MS Teams
- WebEx
- Kaltura
- Zoom

Other

- Terms and conditions
- Archiving students
- Student help desk
- Purchase orders
- Trash can for restoring deleted content
- SEO features
- Account types such as teaching assistant and parent

Cost

NEO has a Free plan with a comprehensive set of essential LMS features and a Premium plan for schools that need more powerful functionality. There are no setup fees, cancellation fees, storage fees, bandwidth fees, support fees, or other hidden costs. Teacher, faculty and parent accounts are not taken into consideration.

Google Classroom is free and is available to schools in the USA that are using G Suite for Education and for any user with a Google account, if they are using it individually, and not for creating classes for a school or university. However, larger schools or universities that need features such as shared calendars and unlimited cloud storage can opt for G Suite Enterprise for Education at \$4 per user per month for faculty, staff, and students.



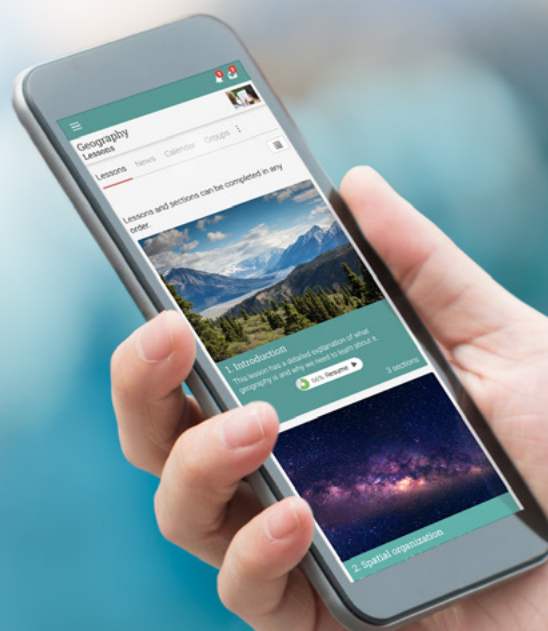
Summary

This was a comparison of the most important feature differences between [NEO](#) and [Google Classroom](#).

NEO is a more attractive and comprehensive solution than Google Classroom. NEO helps schools manage all classroom activities, while Google Classroom has limited functionality and can hardly be categorized as an LMS.

If you require additional information on NEO, please contact us at sales@cypherlearning.com.

www.neolms.com



This comparison was written in August 2020 based on publicly available documentation on both vendors' sites. It was prepared as a guide and is not intended to be exhaustive. The comparison information does not constitute any contractual representation, warranty or obligation on our part. Liability for errors, omissions or consequential loss is expressly disclaimed. If you find any information in this comparison guide to be inaccurate, please contact us and we will correct the information.