

NEO

VS

itslearning

Table of contents

Introduction.....	3
User interface.....	4
Ease of use.....	6
Features.....	7
Cost.....	13
Summary.....	14

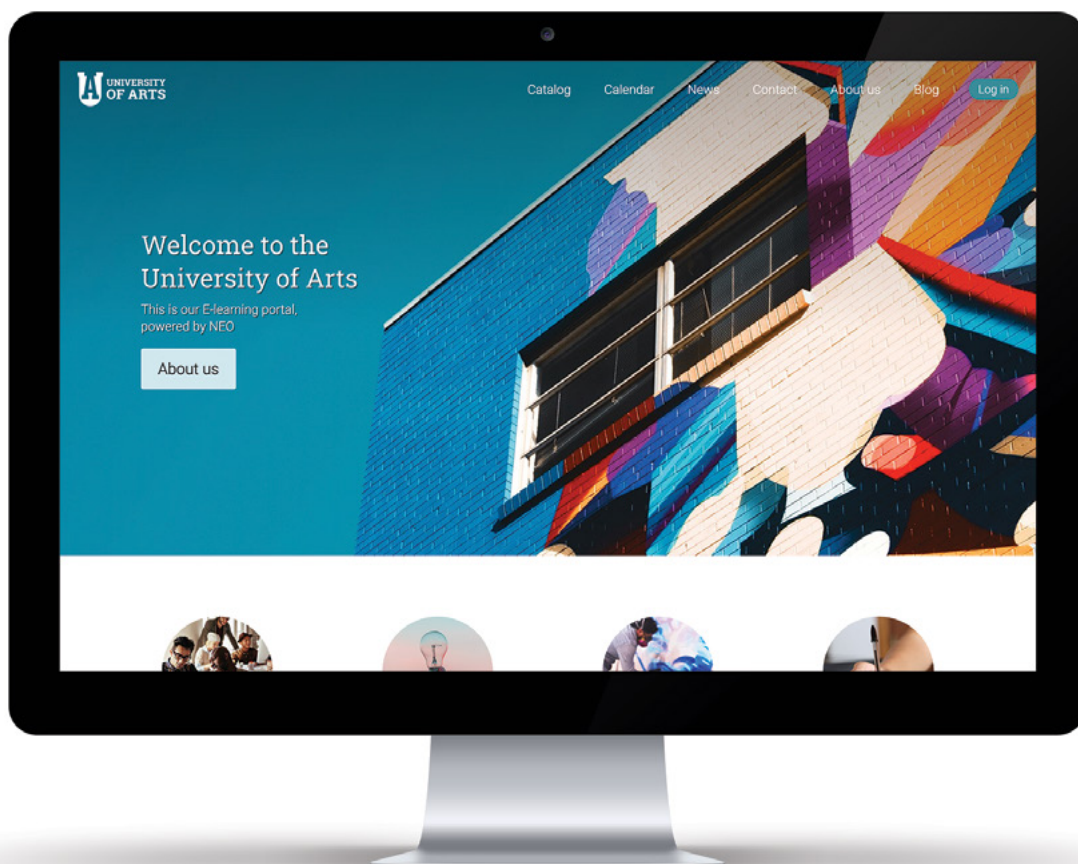


Introduction

This is a detailed comparison between NEO and itslearning, taking into consideration the features, functionality, and cost of each platform.

NEO is a world-class, award-winning learning management system (LMS) for schools and universities. NEO helps schools manage all classroom activities, such as creating and delivering educational content, assessing students, tracking their results, and promoting communication and collaboration between students and teachers/faculty.

itslearning is an LMS for K-12 and Higher Ed institutions, developed by the Norwegian company itslearning AS.



User interface

The [NEO](#) interface is easy to use and has a responsive design that adjusts to the type of device. The platform provides visually attractive tile-based dashboards for students, teachers, administrators, and parents, as well as a graphical class catalog, resources and users catalog. NEO also has a unique “activity display” feature that indicates the level of activity within classes and groups using a pulsing indicator on their tiles together with real-time widgets that scroll through the latest activities.

[itslearning](#) has a user interface that relies on text to convey important information. For example, there is no graphical class, resources, or users catalog. Teachers can customize a small icon for each class by choosing a color to distinguish it from the rest of the classes, which is not an intuitive solution and it doesn't help in terms of navigating the platform.

NEO provides a simple pop-out navigation, that allows users to quickly access all areas of the site. Users can easily add classes, class materials, create groups or enroll users and use shortcuts such as the quick “add class” button on the main dashboard.

The itslearning interface features a top bar in which you find the main areas of the site, but not all of them have a pop-up option, meaning that users have to click on a button that loads another page to find the Calendar, for example. To navigate through a class, another top bar appears under the main bar, making it confusing and not as easy to use, especially for first time users.



The [NEO](#) class layout is also tile-based and users have the choice to switch to a row view. Lesson tiles display the number of sections in the lessons, the badges and points awarded, and certificates associated with the lesson. For students, it is easy to know which lessons have to be started, resumed, or which ones are completed.

The [itslearning](#) class layout is more complicated. Users can see an overview page, lesson plans and a separate Resources page, which contain all learning materials. The layout makes it hard to locate lessons and add new material. To keep up with changes and announcements, students can go to the overview page, which resembles a Facebook feed and important information can be easily lost there.

Teachers can add course content and assignments into different folders. Otherwise, there is no way to create separate lessons, comprised of learning content and assignments. The folders are represented by small icons, that are indistinguishable from one another, instead of tiles. There is no way for students to see their progress through class material.

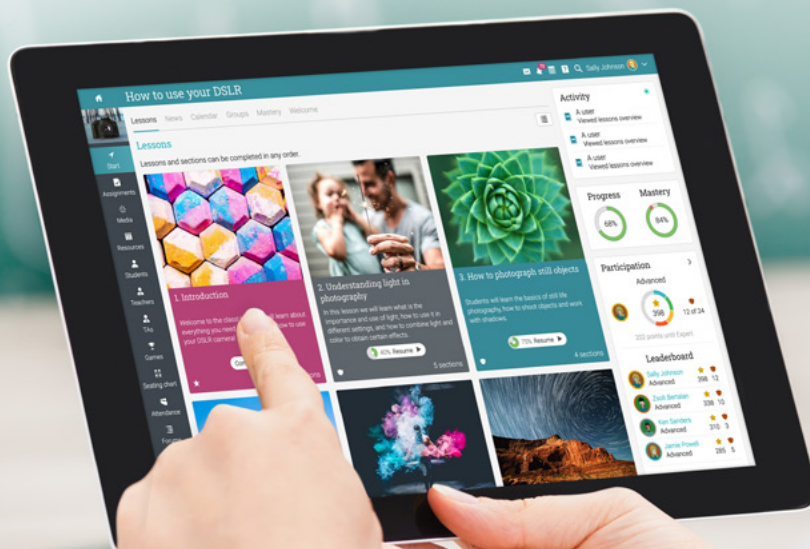
NEO is very accessible, offering more than 40 languages, including Right to Left languages. itslearning is available in 17 languages. NEO has mobile apps for iOS and Android, and schools can have their own branded app. itslearning users can access their native iOS and Android apps.



Ease of use

NEO is very intuitive and easy to use. In addition, it includes an online help center, with videos, getting started guides, and searchable help content. NEO also has a rapid response support forum where staff members typically respond to questions within 15-30 minutes during business hours 24/5.

itslearning offers a Help center with guides and video tutorials, and a support forum.



Features

NEO offers all the tools schools need to manage classroom activities, assess students, track progress, and promote collaboration between students, teachers and parents. Many features can be enabled or disabled to suit young children through university students.

itslearning can be used by schools and universities. The platform offers less features and is less customizable than NEO. For example, schools cannot replace the main itslearning logo from their site with their own logo.

Creating content

NEO provides different types of classes to suit all teaching styles, whether it's instructor-led, blended, self-paced, or micro learning. The NEO authoring tool allows teachers to create beautiful lessons for their students.

itslearning offers instructor-led, blended, and self-paced classes.

Student assessment

NEO provides 15 assignment types, including essay, survey, discussion, team, debate, Dropbox, SCORM, and attendance. Teachers can also create a quiz assignment with 7 question types, including arithmetic questions.

itslearning offers 6 assignment types, most notably missing the essay option.

Tracking progress

In [NEO](#), keeping track of student performance is easy and teachers can get instant insights using extensive analytics, built-in reports, and custom reports. Schools can use the support for competency-based learning to track how well students understand the concepts that are being taught based on their mastery of skills. For example, after associating class content with competencies, educators can go to the Mastery tab to see a mastery coverage of how well the content is aligned with the competencies. They can also use the compliance feature to track teacher compliance with their professional development classes.

[itslearning](#) also has a mastery feature, but there is no option to trigger certain actions when students achieve certain mastery levels or drop below a threshold for a competency. It is also harder to keep track of progress in real time since teachers have to generate reports to see a graphical representation of mastery, for example.

Communication and collaboration

[NEO](#) offers a complete set of communication and collaboration tools for all users such as built-in messaging with bidirectional email integration, chat, social networking, blogs, forums, wiki, groups, and teams.

[itslearning](#) provides less collaboration tools and there are no wikis, teams, forums, or social networking options.

Personalization and engagement

NEO helps teachers save time through automation. This feature allows them to set up actions that should be performed when students complete tasks throughout the platform. The rules can be added for classes, learning paths, groups, accounts, e-commerce, and mastery. NEO also has a powerful gamification feature, which is based on automation. Students can earn points and badges as they complete lessons, assignments, enroll in classes or learning paths, and more. They can also see a leaderboard with their results and participate in fun learning contests together with a team of students. Even more, teachers can dynamically personalize what students see in classes based on their performance.

Itslearning has no automation, gamification or adaptive learning feature.

Customization

In **NEO**, schools can customize many aspects of the platform including the logo, color scheme, fonts, terminology, and more. They can also create a visitor portal with their own portal images, panels, carousel, custom HTML, custom pages and more.

itslearning is harder to customize since schools cannot change the logo or color scheme. They can change images on the main dashboard of a user which is similar to changing the profile picture and cover photo in Facebook.



Here is a list of features included in [NEO](#) that [itslearning](#) does not support:

User Interface

- Graphical users catalog
- Graphical class catalog
- Customizable visitor portal
- Graphical lessons tiles
- Graphical dashboards
- Graphical resources catalog
- Branded mobile apps
- Availability of the platform in 40+ languages
- Activity display

Content

- Class reviews and ratings
- Graphical badges gallery
- Adaptive learning
- Micro learning
- Gamification
- Tagging
- Drip content
- Compliance
- Certificates
- Automation
- Offline mode
- Waitlists
- Badges

Assessment and analytics

- Team and attendance assignments
- Attendance tracking
- Scheduled reports
- Question banks
- Report widgets



Collaboration

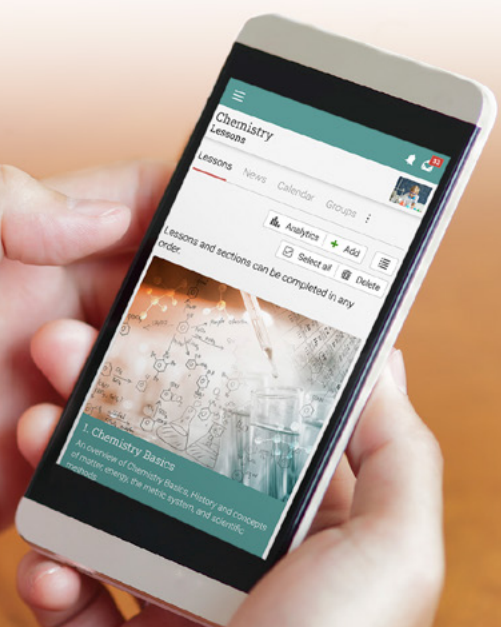
- Social networking
- Public profiles
- CometChat
- Forums
- Teams
- Blogs
- Wikis

Integrations

- Unicheck plagiarism detection
- Safe Exam Browser
- Common Cartridge Format
- MailChimp
- MathJax
- Panopto
- Kimono
- Turnitin
- Equella
- Udemy
- Google Workspace
- Zapier
- LDAP
- iCal
- H5P
- Go1

Web conferencing

- GoToMeeting
- WebEx
- Google Meet



Payment gateways

- PayPal Payments Pro
- PayPal
- Stripe
- Authorize.net
- PayU Latam
- PagSeguro
- PayUbiz
- Flywire

Other

- Learning path templates
- Terms and conditions
- Marketing tools
- Seating charts
- Communications monitoring
- E-commerce
- Terminology
- Monitor, teaching assistant, and partial administrator account
- Purchase orders



Cost

NEO has a Free plan with a comprehensive set of essential LMS features and a Premium plan for schools that need more powerful functionality. There are no setup fees, cancellation fees, storage fees, bandwidth fees, support fees, or other hidden costs.

itslearning does not disclose its pricing plans on their website. Institutions usually have to sign a three-year contract with the company.



Summary

This was a comparison of the most important feature differences between [NEO](#) and [itslearning](#).

NEO is a more attractive LMS than itslearning, offering a larger set of basic features than itslearning, as well as innovative tools that make learning more flexible. NEO is also easier to configure and more affordable for both K-12 and Higher Ed institutions.

If you require additional information on NEO, please contact us at sales@cypherlearning.com.

www.neolms.com



This comparison was written in August 2020 based on publicly available documentation on both vendors' sites. It was prepared as a guide and is not intended to be exhaustive. The comparison information does not constitute any contractual representation, warranty or obligation on our part. Liability for errors, omissions or consequential loss is expressly disclaimed. If you find any information in this comparison guide to be inaccurate, please contact us and we will correct the information.

